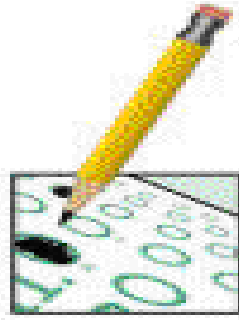


ASSESSMENT:



Informal Assessment is the most used type of assessment in the school. This is where the teacher builds up a picture of each pupil and their strengths and weaknesses through daily observation of how the child copes with the tasks set for him / her. It includes observations on the child's social behaviour and progress as well as their academic progress.

Formal Assessment is where the teacher uses various tests to check the progress of the pupils on particular areas of the curriculum. Two types of tests are used.

Class Tests designed by the teacher. These tests are used frequently to monitor whether or not the child is progressing satisfactorily in all subjects of the curriculum.

Standardised Tests: These are tests that are written by experts outside of the school. They give a picture of how any child is progressing relative to all the children of that age in the country. We administer these tests once every year to all pupils from first to sixth class.

The use of Test Results

In this school, test results are used in three main ways. Firstly, to record the child's progress through the year and from year to year; secondly, to identify children in need of special help; thirdly, test results combined with the teacher's observations form the basis of our reports to parents concerning the child's progress at school.

Reporting of Results of Assessments to Parents



Every year we hold an Open Day where parents come in to meet the teacher of their child for an oral report. Also, at the end of each year parents get a written report on their child. One copy of this report is kept in the school so that each teacher who teaches your child will be familiar with their progress record. Also, if your child should transfer to another school their report cards are forwarded to their new teacher.